



Research Group: Requirements and Architecture Modelling in Software and Systems Engineering

Challenges

Traceability of requirements.

Managing complexity and variability of product-line based systems.

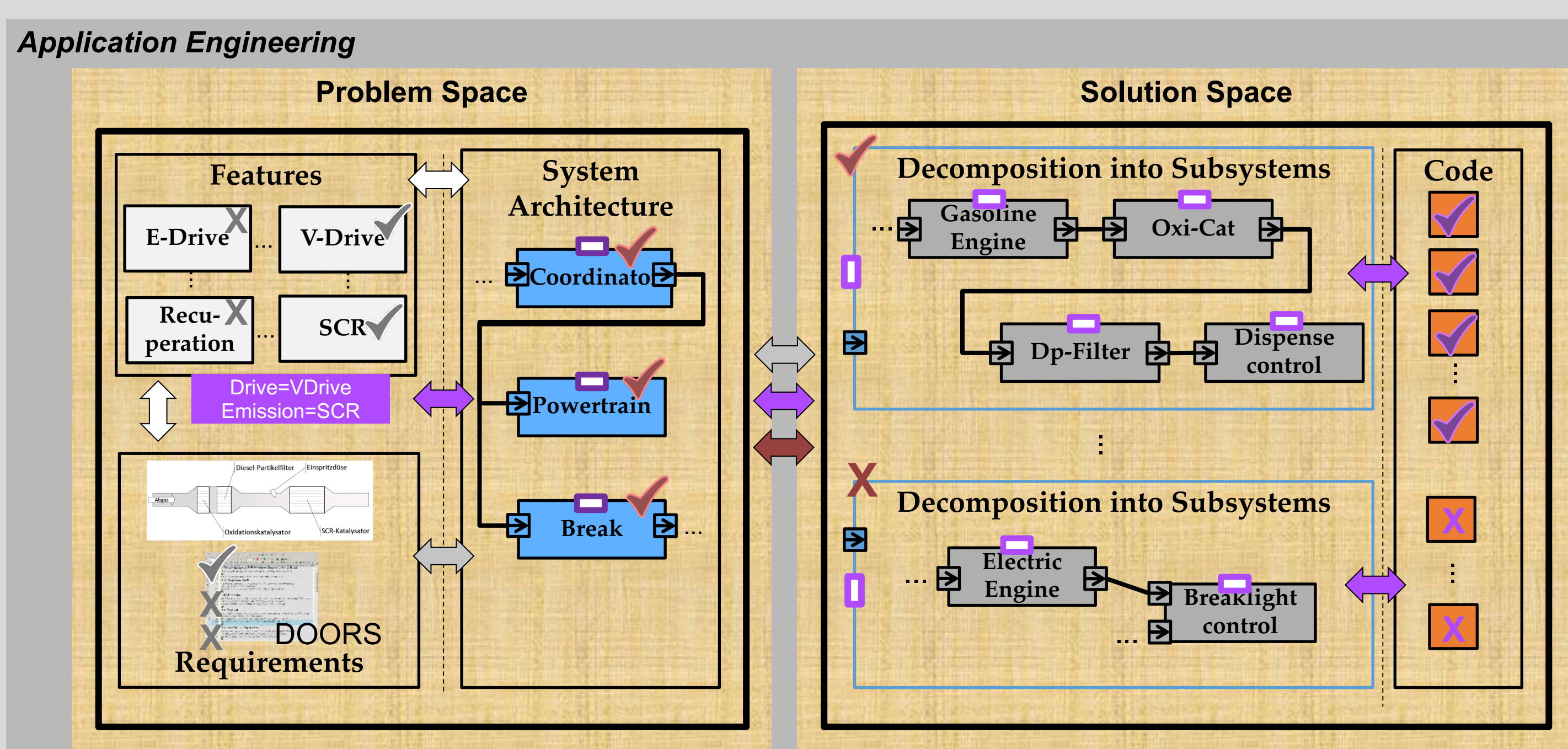
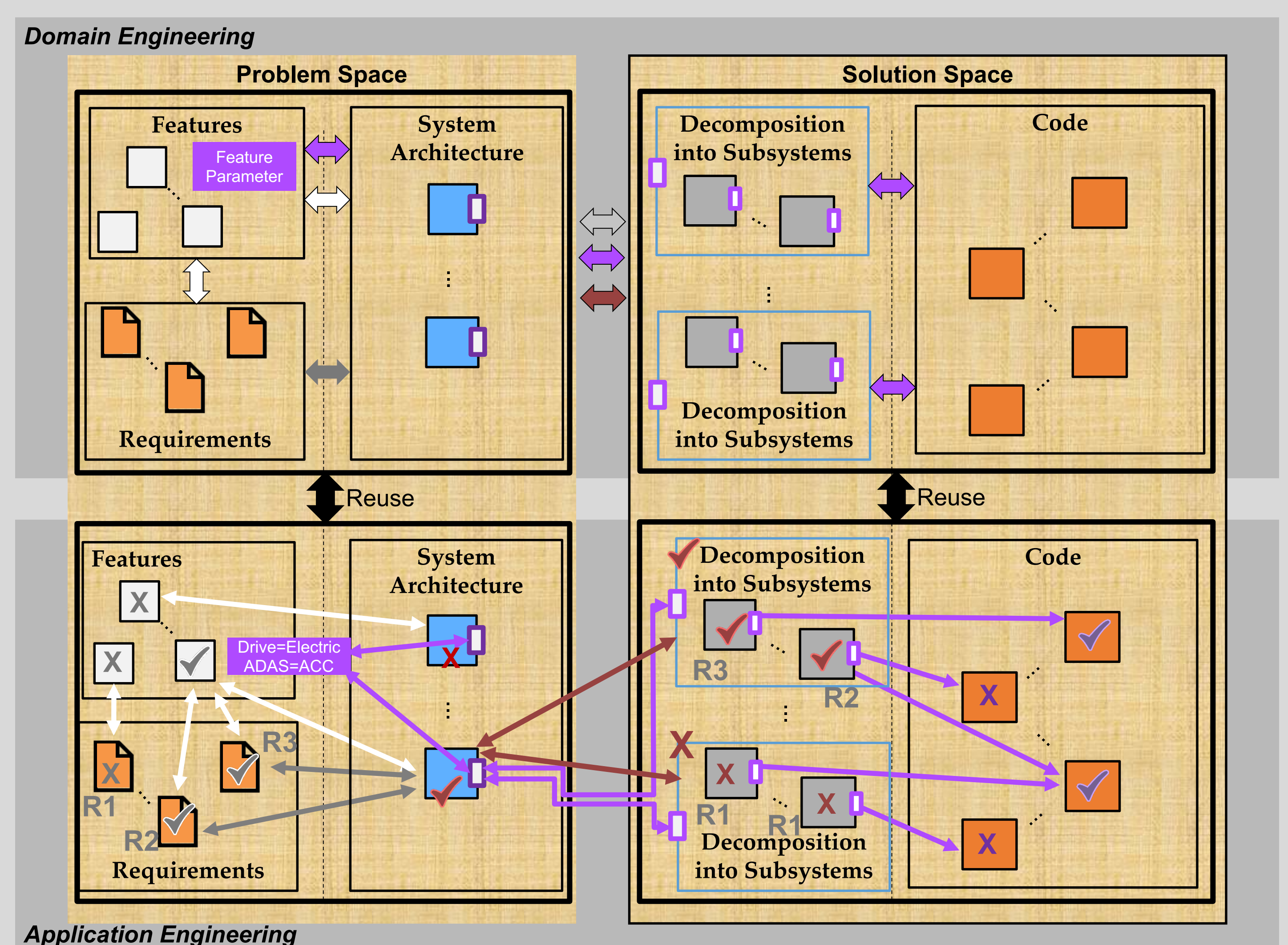
Systematic reuse and integration of models.

Approach for a Product Line

Code artifacts with **implementation variability** can only be reused with great effort for the development of a system variant.

By introducing **feature and variability parameters**, models from the problem space can be mapped to models from the solution space.

Thus, **code artifacts** and **traces to requirements** can then systematically be **reused**.



Application Example

A **vehicle software system** must be developed in a **new product variant**.

For this purpose, the internal combustion engine control, the exhaust gas purification control, and their requirements are systematically reused.

If you are interested in our research topics, please contact us and join our team.

We are looking for YOU!

